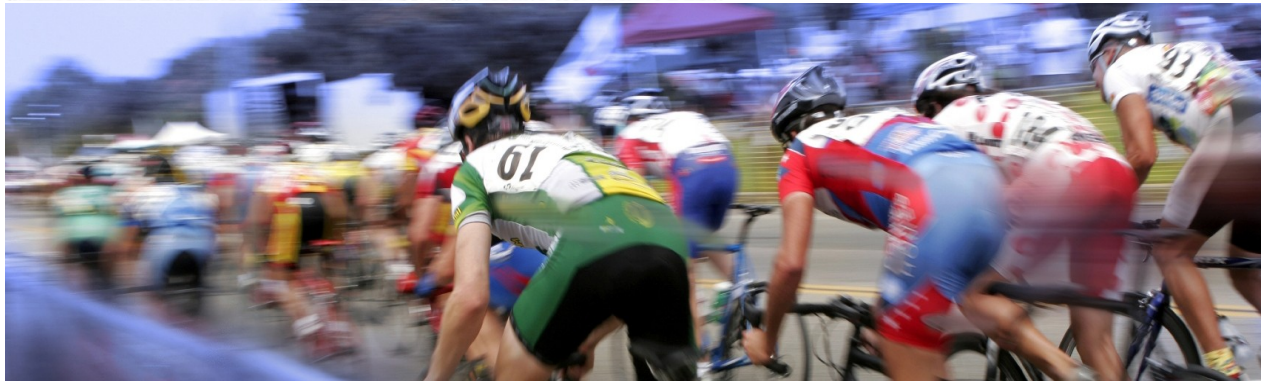


Great Explorations

CERTIFIED OFFICIAL OPERATOR of TOUR de FRANCE



Particulars

Trip Dates

Etape du Tour:
July 5-9, 2012

Custom trips also available. Call or email for details.

Total Days:

5 days/ 4 nights

Arrive/Depart:

Anancy/ Grenoble

Cost:

Land Cost per person (current year):

Before Dec. 31, 2011

US\$1950 pp

Sing. Supp.: US\$400

After January 1, 2012

US\$2450 pp

Sing. Supp.: US\$400

Bike Rental: US\$140

Our rental fleet includes Cannondale CAAD 5 with triples and Van Nicholas titanium Mistral racing bikes with compact double. Photos and specs are on our web site.

Includes 4 nights hotels, breakfast and dinner each day, routes and maps and guide support etc.

Etape du Tour, 2012 Albertville to La Toussuire

Etape du Tour is an annual event held in conjunction with the Tour de France and is an actual stage of the Tour, held in advance of the pros stage and with all of the support and prestige of the Tour (motorcade, closed roads etc.) In 2012, the Etape will feature a stage between Albertville and La Toussuire featuring col de Madeleine, col de la Croix de Fer, Col de Mollard among others.

Great Explorations' experience at the Tour is unrivalled. Combined with our 28 years designing and leading tours throughout France give us an edge when managing logistics around an event such as this. In 2012, we will have a limited allotment of registrations and these spaces will sell out quickly.

Arriving to Annecy

Arrive to Annecy; you can fly into Paris-Charles de Gaulle and take the train down to Annecy.

Itinerary

July 5: Annecy

We'll meet at the 4-star Hotel Splendid, Annecy at 4:00 pm for bike fit. We'll have time for a short warm-up ride and then enjoy dinner in the historical center.

July 6: Annecy

There is lots of variety in the riding here, from flat and fast lakeside paved routes to nearby cols that have been featured on recent Tour routes. We've scouted out routes of 40 km, 60 km, and 80 km if you can take yourself away from the lakeside setting of Annecy.

July 7: Annecy

Relax today. Ride from Annecy to Albertville (40 km) if you wish. We will pick-up bibs and race packages and then back in Annecy, relax with an early dinner to rest up for the big day.

Great Explorations

CERTIFIED OFFICIAL OPERATOR of TOUR de FRANCE



Particulars

Trip Dates

Etape du Tour:
July 5-9, 2012

Custom trips also available. Call or email for details.

Total Days:

5 days/ 4 nights

Arrive/Depart:

Anancy/ Grenoble

Cost:

Land Cost per person (current year):

Before Dec. 31, 2011
US\$1950 pp
Sing. Supp.: US\$400
After January 1, 2012
US\$2450 pp
Sing. Supp.: US\$400

Bike Rental: US\$140

Our racing bikes are Cannondale CAAD 5 with triples and Van Nicholas titanium Mistral bikes with compact double. Photos and specs are on our web site.

Includes 4 nights hotels, breakfast and dinner each day, routes and maps and guide support etc.

July 8: Etape du Tour– Albertville to La Toussuire

The race start will be between 7-8 and we will have you at the start line in time to position yourself in the start corrals. It will be a fabulous day with epic climbs, race support and lots of crowds along the route cheering you on. Whatever your time, you'll never forget the elation of crossing the finish line. We'll gather and transfer to Grenoble to our 4-star hotel for final night dinner and celebrations.

July 9 : Depart

Depart at your leisure (or stay on and do our Tour de France trip Alps trip starting on this day!)

Please note: We have currently booked Hotel Splendid, the top hotel in Anancy. We think you'll appreciate the comfort of this hotel both before (and after) your Etape!

If you have any questions about this trip, please consult our Travel Advisors.

Great Explorations

CERTIFIED OFFICIAL OPERATOR of TOUR de FRANCE

Accommodations



Hotel Splendid, Annecy

Just in front of the lake of Annecy and in the heart of the historic and commercial part of the city, the situation of hotel Splendid is one of the best in the whole town.

With its 47 rooms recently renovated, the establishment proposes quality services in a unic and authentic environment.



Le Grand Hotel, Grenoble

Located at 30 meters from the Place Grenette and Parking Lafayette, it will welcome you in an exceptional place of comfort You will be their distinguished guest and their personalized service offers a tailor-made relationship. In this heaven of comfort, every customer is a VIP and the team is entirely devoted to him.

What's Included in the Cost of Your Trip?

- Guaranteed entry into the Etape
- Services of one or more Great Explorations guides and support vehicle
- Lodging as per final itinerary
- All breakfasts, 4 dinners
- Detailed map and cue sheets
- Transfers between Annecy, Albertville, and La Toussuire.
- Travelogue
- Pre-departure Trip Planner with tips on what to bring and general information about traveling in France
- All tips in hotels, restaurants etc. (excludes discretionary tips for guides)
-

Please note: Final itinerary is subject to revision; any changes made are done so in an attempt to provide the best possible trip given route conditions and available services. Due to the nature of our business and exchange rates, prices are subject to change. All prices quoted are U.S. dollars but we gladly accept payment in Canadian dollars also. Due to cancellations and waiting lists, trip availability fluctuates daily. If you have any questions or would like to confirm space on this trip before making your reservation, please contact us at info@great-explorations.com or by telephone at **604.730.1247**

