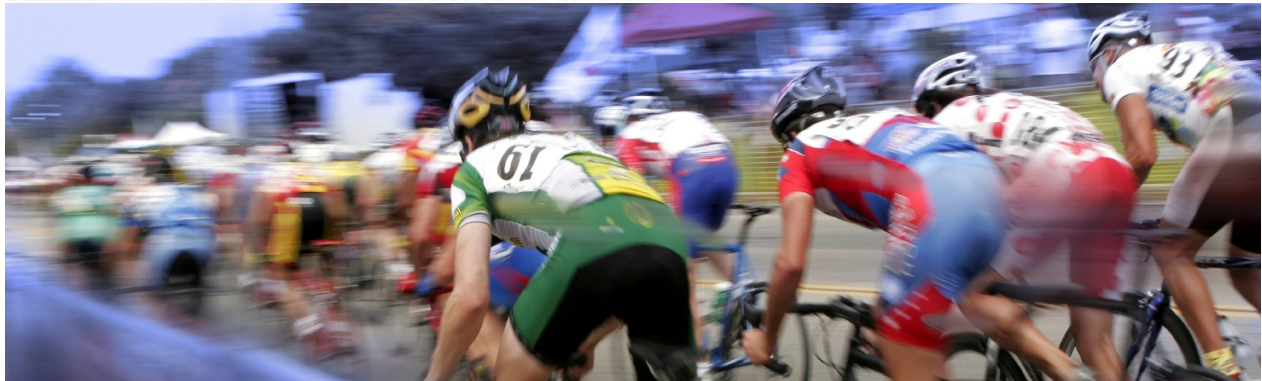


# Great Explorations

CERTIFIED OFFICIAL OPERATOR of TOUR de FRANCE



## Particulars

### Trip Dates

Alps  
July 9-15, 2012

Custom trips also available. Call or email for details.

### Total Days:

7 days/ 6 nights

### Arrive/Depart:

Beaune/ Grenoble

### Activity Level:

Daily Options:  
Moderate: 40-60 km  
Intermediate: 60-80 km  
Advanced: 80-100+ km

### Cost:

Until Dec 31  
US\$2650 pp  
7B/ 2L/ 5D

\*After Dec 31-  
US\$2950 pp

### Single Supplement:

US\$600

## Tour with the Pros in France, Alps

For anyone that joined us in 2011, it was truly an amazing experience watching Australian Cadel Evans reign supreme! 2012 will be equally exciting with Cadel back to defend off the likes of Contador, the Schleck brothers and an expected field deep with contenders. Our Alps trip will begin in Burgundy, continue to the dramatic lakeside setting of Lake Annecy, and then head for the Alps with ascents of the classic cols including Madeleine, Croix de Fer, Alpe D'Huez and others. In 2012, we have again designed our trips to minimize transfers and to maximize both the time and the quality of riding. We'll watch the race on days that it makes sense to do so, in locations that will have you mixing with locals, watching large screen televisions of riders approaching (beer in hand if you choose); there will be live music, festivities and then of course, the peleton with your front row vantage point.

In planning our trips we have several goals. Our primary objective is to provide an itinerary that allows guests to experience the race up close and to participate in the excitement of the greatest bike race in the world. Planning cycling routes that coincide with the best opportunities for viewing is paramount. We choose hotels and villages that offer the best in location and amenities and our choices are made with guests comfort and experience in mind.

### Only Great Explorations:

- Small groups, extraordinary guides, and authentic experiences.
- In Beaune, wine tasting in centuries old caves
- A ride you will never forget: Alpe D'Huez, without the crowds
- Order off the menu at restaurants you won't find in guidebooks
- Mix luxurious (Le Cedre, Beaune; Grand Hotel, Uriage) with charming and comfortable auberge style lodgings in mountain settings
- We design and operate our own trips so there are only good surprises

# Great Explorations

CERTIFIED OFFICIAL OPERATOR of TOUR de FRANCE

## Trip Dates

Alps  
July 9-15, 2012

Custom trips also available. Call or email for details.

## Total Days:

7 days/ 6 nights

## Arrive/Depart:

Beaune/ Grenoble

## Activity Level:

Daily Options:  
Moderate: 40-60 km  
Intermediate: 60-80 km  
Advanced: 80-100+ km

## Cost:

Until Dec 31  
US\$2650 pp  
7B/ 2L/ 5D

\*After Dec 31-  
US\$2950 pp

**Single Supplement:**  
US\$600

## Arriving to Beaune

Arrive to Beaune; you can fly into Paris-Charles de Gaulle and take the fast train down to Beaune or fly into Lyon, St. Exupery.

## Itinerary

### July 9: Beaune

Arrival in Beaune. Our Alps trip starts in Beaune, Burgundy. It's a quick and easy TGV (fast train) to get there. One step out into the streets of Beaune and you will know why this is an amazing place to start a cycling trip. Wine makers, quaint bistros, hillsides of vines, and a historical center that is the perfect size make this one of our favorite villages in France. A cyclists' paradise, some would say. Your hotel is included on arrival, at the 4-star Hotel Le Cedre. Bike fit will be between 4-6, after and there will be time for a short warm-up ride if you choose. We will have dinner at one of our favorite restaurants in town, Cave Madeleine. Bon appetit!

### July 10: Beaune

This is a rest day for the pros and we will take the opportunity to ride a loop through some of the most prestigious vineyards in the world; choose between 60, 80 and 100 km options, with stops at a fascinating museum, an ancient abbey, *tonneliers* (wine barrel makers) and of course, wine tasting. If you elect a short ride, spend the afternoon in Beaune, visiting the exquisite Hotel Dieu- the immaculately preserved medieval hospice, famed for its Flemish tiles. Dinner will be another culinary experience at an exceptional restaurant where we are welcomed as friends. Ride Distances: 60, 80, 100 km

### July 11: Annecy

*Stage 10: Macon to Bellegarde-sur-Valsérine (194 km)- live viewing*  
Departing Beaune, we will cycle south to Macon, much of it along a dedicated cycling path along a *voie verte*. In Macon, we will watch the start of stage 10 and then follow the peleton east. We're headed to picturesque Annecy, with its aqua-marine lake. If you have some energy left, the ride around the lake makes for a great late afternoon loop. Ride Distances: 40, 80 km, 120 km

### July 12: La Chambre

*Stage 11: Albertville to La Toussuire-Les Sybelles (140km) - live viewing*  
We will get an early start and ride to Albertville (flat and fast) where the start of Stage 11 will be. Leaving ahead of the peleton, we will ride the official route today over col Madeleine one of the most beautiful cols in the Alps. We're staying in an authentic auberge in the quaint ski village of St. Francois Longchamp. Ride Distances are 60, 80, and 100 km.

### July 13: La Grave

*Stage 12: Saint-Jean-de-Maurienne to Annonay Davezieux (220 km)- live viewing*  
We will begin the day with a long descent out of Longchamp followed by a climb up and over Galibier, one of the most famous cols of the Alps and one that was featured twice in 2011. We are staying a comfortable hotel with wonderful hosts in La Grave. Ride Distances: 60, 100 km

### July 14: Grenoble

Riding from la Grave, we will descend to the valley and make our approach to Bourg D'Oisans. Here you can challenge Alpe D'Huez or ride straight towards Grenoble. We are staying at Le Grand Hotel in Uriage Les Bains and will enjoy a final dinner to toast our week with the Tour. Ride Distances: 60 km, 100 km.

### July 15: Grenoble

Depart after breakfast.

# Great Explorations

CERTIFIED OFFICIAL OPERATOR of TOUR de FRANCE

**Note:** This is a preliminary itinerary which will be updated as further route information becomes public. Hotels used on the trip are representative, but not necessarily those we will use. Any changes made will be done with the goal of making the trip the best that we can given available services etc.

On our Tour with the Pros trips, we generally try to provide options to cycle 60 km, 80 km or 100 km on each cycling day. Although anyone of moderate cycling level may enjoy this tour, it is ideally suited to those with intermediate to advanced fitness levels. By this we mean you should be able to cycle 60 km at a minimum with some hills. If you have any questions about this trip, please consult our Travel Advisors.

## Accommodations



### **Hostellerie le Cedre, Beaune**

Ideally situated in the heart of Beaune, opposite the ramparts, this 4-star hotel has luxurious rooms, and comfortable lounges, bar and shaded outdoor terraces.



### **Hotel Splendid, Annecy**

Just in front of the Lake Annecy and steps from the the historic center, the location is ideal. This is the top hotel in town with large comfortable rooms and great service.



### **Hotel la Perelle, St-Francois**

We have stayed here on many past Tour trips for the simple reason that it has the perfect location just under col Madeleine. There is a swimming pool and sauna and the welcome is warm.



### **Hotel Edelweiss, La Grave**

La Grave is our favourite ski resort in the Alps and this charming and simple hotel is a visitor favorite. The terrace gives the most stunning panoramas of the Alps.



### **Grand Hotel d'Uriage, Uriage-les-Bains**

This is a stunning 4-star luxury property with wonderful amenities. Situated in a panorama of mountains, and just 15 km from Grenoble, it is the perfect hotel to finish our tour. Past guests have included Coco Chanel and Napoleon III.

# Great Explorations

CERTIFIED OFFICIAL OPERATOR of TOUR de FRANCE

## What's Included in the Cost of Your Trip?

- Services of one or more experienced Great Explorations guides and support vehicle
- Lodging as per final itinerary
- All breakfasts, 2 lunches, 5 dinners
- Detailed map and cue sheets
- All baggage transportation during the tour
- Travelogue
- Pre-departure Trip Planner with tips on what to bring and general information about traveling in France
- All tips in hotels, restaurants etc. (excludes discretionary tips for guides)

**Please note:** Final itinerary is subject to revision; any changes made are done so in an attempt to provide the best possible trip given route conditions and available services. Due to the nature of our business and exchange rates, prices are subject to change. All prices quoted are U.S. dollars but we gladly accept payment in Canadian dollars also. Due to cancellations and waiting lists, trip availability fluctuates daily. If you have any questions or would like to confirm space on this trip before making your reservation, please contact us at [info@great-explorations.com](mailto:info@great-explorations.com) or by telephone at 604.730.1247

