

Great Explorations



Trip Dates

2010

July 10-17*
August 16-22**

Custom trips also available and can start any date. Call or email for details.

2011

July 16-22*
August 15-21**

The Tour can be combined with our [Stage 1](#) which precedes or our [Stage 3](#) which follows..

Trip Size

June departure:
8-12 participants

July departure will have a maximum of 24.

Total Days:

7 days/ 6 nights
(5 riding days)

Arrive/Depart:

Beaverdell/Coalmont

Kettle Valley Trail, Biking Stage 2: Beaverdell to Coalmont

This tour incorporates the classic Kettle Valley line with overnights at McCulloch Lake, Chute Lake, West Summerland, Chain Lake and Coalmont. We'll average 55 km (34 miles) per day with highlights to include Myra Canyon and wine sampling in the Okanagan region of British Columbia's interior.

*The July tour will support TheBigWild.org to help raise awareness and funding for Canada's wild places. **The August tour will coincide with the 3rd Annual Princeton Traditional Music Festival, and promises to be a festive trip! (please note that the August tour will finish in Princeton instead of Coalmont)

Itinerary



DAY 1:

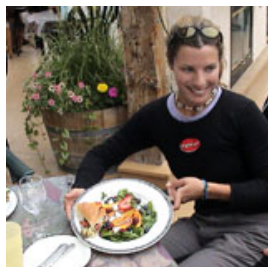
For those who have booked transportation from Vancouver, we transfer by van to Beaverdell, stopping in Hope for lunch (and to pick up those who would prefer to leave their cars there). We arrive to Beaverdell late afternoon which may allow time for those who want to explore the local area on bike. We will have dinner together and then join in festivities at the Beaverdell Hotel.

DAY 2:

Beaverdell to McCulloch Lake 53 km / 33 miles
Our ride today passes the ghost town of Carmi before continuing through the lush valley that gave the railway line its name. We'll lunch at Arlington Lakes and then continue on to McCulloch Lake where we overnight.

DAY 3:

McCulloch Lake to Chute Lake 50 km / 31 miles
We'll ride today through the spectacular Myra Canyon. It was here in 2003 that a fire ravaged the famous wooden trestles that had been a major attraction of the trail; all trestles have been re-built and will be re-open in 2008. We'll reach Chute Lake late afternoon where our campsite is lakeside with boating and swimming available.



Great Explorations

Activity Level:

Moderate
20-37+ miles daily
van supported

Terrain:

The railgrade has a
maximum grade of 2%

Cost

**Land Cost (current
year):**
CAD\$995/US\$845

Includes all meals

Bike Rental:
CAD\$140 / US\$120
Mountain bike

Transfers:
Vancouver to Beaverdell:
CAD\$80/US\$65

Coalmont to Beaverdell:
CAD\$60/US\$50

Coalmont to Vancouver:
CAD\$42/US\$35



DAY 4:

Chute Lake to West Summerland 58 km / 36 miles

Today, we're off to Penticton & West Summerland. Enroute we'll visit the rock ovens built by the railway builders to bake their bread in. We'll stop for lunch and wine tasting at a prominent winery and then visit an interesting railway museum in Penticton. We'll have dinner near Okanagan Lake; on some trips we are joined by a band of banjo playing, railway story spinning musicians.

DAY 5:

West Summerland to Chain Lake 55 km / 34 miles

We continue westward, detouring from the railway through rolling countryside towards Faulder. We pass a number of pristine lakes, staying overnight at Chain Lake.

DAY 6:

Chain Lake to Coalmont 60 km / 37 miles

We ride to Princeton through 'cattle country' enjoying a downhill grade, perhaps having lunch and a swim at the Princeton Castle along the way. We'll tour the Princeton museum and hear fascinating stories of Princeton's past. Afterwards, we continue on to Coalmont and Granite City. After dinner, we'll take on the locals in a shuffleboard tournament in the historic Coalmont Hotel.

DAY 7:

Van transport will leave from Coalmont on Friday morning for Vancouver. For those continuing with Stage 3, please refer to the [Stage 3 Itinerary](#).

Camping



Camp sites include a mix of provincial, private and wilderness parks; on 3 of the 6 nights, hot showers are available (on 3 evenings we are at wilderness sites with solar showers and propane heated basins of water to wash).

Great Explorations



What's Included in the Cost of Your Trip?

- services of one or more experienced Great Explorations guides and support vehicle
- 6 nights camping
- all breakfasts, lunches & dinners (appetizers daily, gourmet meals, lots of variety, vegetarians gladly accommodated)
- entrance fees for selected historical sites and museums
- detailed map, route instructions and Great Explorations Travel Guide
- all baggage transportation
- all transportation from initial meeting point to final drop-off (see arrive/depart cities)

Goods and Services Tax (GST) of 5% must be charged on trips in Canada.

Please note: Final itinerary is subject to revision; any changes made are done so in an attempt to provide the best possible trip given route conditions and available services. Due to the nature of our business and exchange rates, prices are subject to change. All prices quoted are U.S. dollars but we gladly accept payment in Canadian dollars also. Due to cancellations and waiting lists, trip availability fluctuates daily. If you have any questions or would like to confirm space on this trip before making your reservation, please contact us at info@great-explorations.com or by telephone at **604.730.1247**