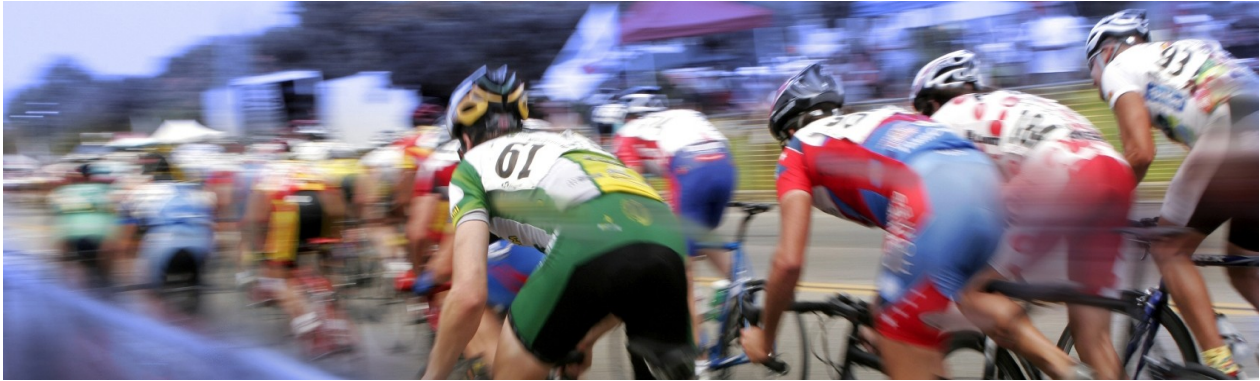


# Great Explorations



## Trip Dates

### 2012

May 11-18

Custom trips also available. Call or email for details.

### Trip Size:

8-16 participants

### Total Days:

8 days/ 7 nights

### Arrive/Depart:

Santa Rosa/ Bakersfield

### Activity Level:

Moderate with challenging options  
40-60 miles daily  
van supported

### Terrain:

Variety

### Land Cost (current year):

US\$2650

Includes 7B/2L/5D

### Single Supplement:

US \$450

### Bike Rental:

(on request)

Marin Stelvio Carbon/  
Shimano 105

US \$180

Specialized Roubaix

US \$280

## Tour of California, Biking Tour with the Pros

The Tour of California is recognized as one of the largest cycling events in the United States and Great Explorations will again be offering the opportunity to cycle the beautiful California routes and watch world-class cyclists including three-time winner Levi Leipheimer, Chris Horner, Christian Vande Velde, Dave Zabriskie, Ryder Hesjedal and an international field that puts this race in the ranks of the Grand Tours.

In 2012 we are offering a trip from Santa Rosa to Bakersfield with the opportunity to see the pros on 4 occasions. You will have ample chance to mix with professional racers and be up close to the action. In Great Explorations style, we'll take care of the logistics and ensure that you will enjoy yourself to the fullest.

Great Explorations has been organizing trips to 'Grand Tour' races for over 10 years (one of only two N.A. official tour operators of the Tour de France) and has unparalleled experience in trips of this kind. Small groups, extraordinary guides, and authentic experiences.

- Small groups, extraordinary guides, and authentic experiences.
- A ride you will never forget: from Monterey along Big Sur and through a cathedral of redwoods without the crowds
- Private wine tastings at vineyards
- Order off the menu at restaurants you won't find in guidebooks
- Wine reception on arrival and final nights
- A Great Explorations custom jersey for each guest
- The opportunity to meet pro riders from top teams
- We design and operate our own trips so there are only good surprises.

\*From our Tour of California trips, Great Explorations will be making a donation of \$100 per guest to your choice of: the Lance Armstrong Foundation; Breakaway from Cancer Foundation; your local cancer charitable organization (subject to a minimum of 12 participants).

# Great Explorations

## Trip Dates

### 2012

May 11-18  
Custom trips also available. Call or email for details.

### Trip Size:

8-16 participants

### Total Days:

8 days/ 7 nights

### Arrive/Depart:

Santa Rosa/ Bakersfield

### Activity Level:

Moderate with challenging options  
40-60 miles daily  
van supported

### Terrain:

Variety

### Land Cost (current year):

US\$2650  
Includes 7B/2L/5D

### Single Supplement:

US \$450

### Bike Rental:

(on request)  
Marin Stelvio Carbon/  
Shimano 105  
US \$180  
Specialized Roubaix  
US \$280

## Itinerary

### our of California- Getting there:

This trip starts in Santa Rosa, hometown of Levi Leipheimer and the official start of the 2012 Tour of California. You can fly into Santa Rosa or San Francisco and shuttle up- we'll provide additional details on arriving in your confirmation packages.

### DAY 1 (May 11):

Santa Rosa- Your hotel is included on arrival day. We'll fit bikes between 4-6 pm and have a reception at 6:00 before dinner. If you arrive early enough, enjoy a warm-up ride around town. We're staying at the Hyatt Vineyard Creek, perfectly positioned in Santa Rosa.

### DAY 2 (May 12):

Santa Rosa- we've got a great ride planned today, taking in a favourite ride out of Healdsburg. There will be a good chance of seeing the pros out today, getting one last spin in before the big start tomorrow. Afternoon options include wine tasting (and swim!) at Francis Ford Coppola's winery. We're having dinner in one of the best restaurants in Sonoma County, the first of many dining experiences that will feature California cuisine at its finest. Ride Distances: 30, 50 miles



### DAY 3 (May 13): Stage 1 Santa Rosa (live viewing)

San Francisco – We will watch the start of the race today in Santa Rosa and also have time to do a local ride to take in more of Sonoma County's superb scenery. Afterwards, we will transfer into San Francisco to the Sheraton Fisherman's Wharf, a stylish hotel near the waterfront in downtown San Francisco. We will dine at a casual restaurant near Fisherman's Wharf. Ride Distances: 40, 60 miles.

### DAY 4 (May 14): Stage 2- San Francisco- Santa Cruz (live viewing)

Santa Cruz- After watching the start of Stage 2, we will transfer south to Halfmoon Bay and cycle a dramatic stretch of coastline passing strawberry farms and miles of pristine beaches. We'll see the pros twice on this day and finish in Santa Cruz, a charming town with a surf and bike culture. We're staying at the Dream Inn, a Joie de Vivre property which boasts beachfront location. Surfing anyone? 30 miles/ 50 miles



### DAY 5 (May 15): Stage 3- San Jose-Livermore

Cambria –We'll give the race a pass today as they cycle from San Jose to Livermore, choosing instead one of the most spectacular rides in America, the Big Sur coastline. We'll begin cycling from Seaside, along a dedicated cycling path that winds through dunes- then on to Monterey and dreamy Carmel. At Big Sur, savor the moment before continuing on to San Simeon and Cambria, a quaint village with superb restaurants to choose from. We're staying at El Colibri Hotel, located on the beach. Ride Distances: 50, 100 miles.

### DAY 6 (May 16): Stage 4: Sonoma to Clovis

Solvang- Today's destination is Solvang, a mecca for cycling enthusiasts. We will depart Cambria and shuttle to Lompoc to ride one of the most scenic routes in Santa Barbara county passing several vineyards (including Stanford Winery from the film 'Sideways'). Ride the 2011 Time Trial route, without the crowds. We will have time to sample wine in Los Olivos before dinner. Ride Distances:30, 50, 70 miles

# Great Explorations

## Trip Dates

### 2012

May 11-18  
Custom trips also available. Call or email for details.

### Trip Size:

8-16 participants

### Total Days:

8 days/ 7 nights

### Arrive/Depart:

Santa Rosa/ Bakersfield

### Activity Level:

Moderate with challenging options  
40-60 miles daily  
van supported

### Terrain:

Variety

### Land Cost (current year):

US\$2650  
Includes 7B/2L/5D

### Single Supplement:

US \$450

### Bike Rental:

(on request)  
Marin Stelvio Carbon/  
Shimano 105  
US \$180  
Specialized Roubaix  
US \$280

### DAY 7 (May 17): Stage 5: Bakersfield Time Trial

Bakersfield- After a morning ride, we'll transfer to Bakersfield to watch the Time Trial, typically one of the most exciting stages of the tour. We're staying at the Hyatt, a Starwood property. Ride Distances:30, 40 miles.

**DAY 8 (May 18):** Depart Bakersfield for onward travel. If you are going to San Francisco, there are Amtrack trains (dep 7:15 arr 11:30- \$47) and there is also an airport with flight connections to SFO, LAX, Phoenix, Denver, etc. with United and US Air.

If you are comparing our trip to others, be sure to consider the number of nights included, days riding, time spent shuttling (when you could be cycling), the quality of lodging, bikes, guides and experience in planning trips of this type (+20 years). We hope you'll join us!

### What's Included in the Cost of Your Trip?

- services of one or more experienced Great Explorations guides and support vehicle
- 7 nights lodging
- all breakfasts, 2 lunches, and 5 dinners
- entrance fees for selected historical sites, museums and wine tastings
- Great Explorations cycling jersey
- wine reception on first and final nights
- detailed map and route instructions
- all baggage transportation
- all transportation from initial meeting point to final drop-off (see arrive/depart cities)

Please note: Final itinerary is subject to revision; any changes, including hotels, are made are done so in an attempt to provide the best possible trip given route conditions, available rooms and services. Due to the nature of our business and exchange rates, prices are subject to change. All prices quoted are U.S. dollars but we gladly accept payment in Canadian dollars also. Due to cancellations and waiting lists, trip availability fluctuates daily. If you have any questions or would like to confirm space on this trip before making your reservation, please contact us at [info@great-explorations.com](mailto:info@great-explorations.com) or by telephone at **604.730.1247**

# Great Explorations

## Trip Dates

### 2012

May 11-18  
Custom trips also available. Call or email for details.

### Trip Size:

8-16 participants

### Total Days:

8 days/ 7 nights

### Arrive/Depart:

Santa Rosa/ Bakersfield

## Accommodations:

[Hyatt Vineyard Creek, Santa Rosa](#)

[Sheraton Fisherman's Wharf](#)

[Dream Inn, Santa Cruz](#)

[El Colibri Inn , Cambria](#)

[Hadsten House, Solvang](#)

[Sheraton Bakersfield](#)

## Accommodations



### Hyatt Vineyard Creek, Santa Rosa

This hotel is the best in Santa Rosa. It boasts large rooms with contemporary decor, an in house spa, award-winning restaurant Le Brasserie, swimming pool and courtyard lounge with fire pits.



### Sheraton Fisherman's Wharf

Having recently completed a \$33 million renovation, this hotel now features a sophisticated decor, large rooms, swimming pool, martini and sushi bar and more. The location is superb with Fisherman's Wharf a short stroll away.



### Dream Inn, Santa Cruz

A beachfront hotel in Santa Cruz, this upscale boutique hotel is adjacent to the historic boardwalk with views of Monterey Bay from every room. There is a superb restaurant on site, Aquariumus.



### El Colibri Inn, Cambria

Newly opened in 2010, this boutique hotel is on the coast, just a short stroll from the quaint village of Cambria. The hotel has a wine bar, spa and oversized guest rooms. Cambria is filled with great restaurants and shops and cafes.



### Hadsten House & Spa, Solvang

This hotel features large rooms with all amenities and has a spa on site. Ranked # 1 hotel in Solvang on Trip Advisor.



### Sheraton Four Points Bakersfield

Located in the main business district of Bakersfield, this hotel includes 7.5 acres of lush landscaped grounds, swimming pool and fine dining restaurant.